



Jennifer Harper Ogle
Associate Professor
Clemson University
2017 NSF RED Award

All In

A group of children are standing in a circle on a grassy lawn in front of a light blue house. One child in the center of the circle is looking down. A boy on the right side of the circle is holding a red and black soccer ball. The children are dressed in casual clothing, including jackets, sweaters, and skirts. The scene is outdoors during the day.

What could he possibly add to our team?

The Last One Picked



Exclusive → Inclusive

Disconnected
Demoralized
Devalued

A woman with long dark hair, wearing a patterned sleeveless top and blue jeans, is walking through a large, ornate wooden doorway. She is looking out of the doorway with a thoughtful or concerned expression. She has a pink bag slung over her shoulder. The doorway is set in a building with a classic architectural style, featuring a green-painted pillar with rivets. In the background, other people are visible, suggesting a public or commercial setting.

Lack of interpersonal relationships in the major was the most significant reason stated for low sense of belonging.

Low Sense of Belonging → Exit

Our underrepresented students in Civil Engineering have a significantly lower sense of belongingness.



At Clemson...

This project has enabled us to sit back and re-envision the engineer of the future and the inclusive environment needed to make it happen.

Re-envisioning Our Future

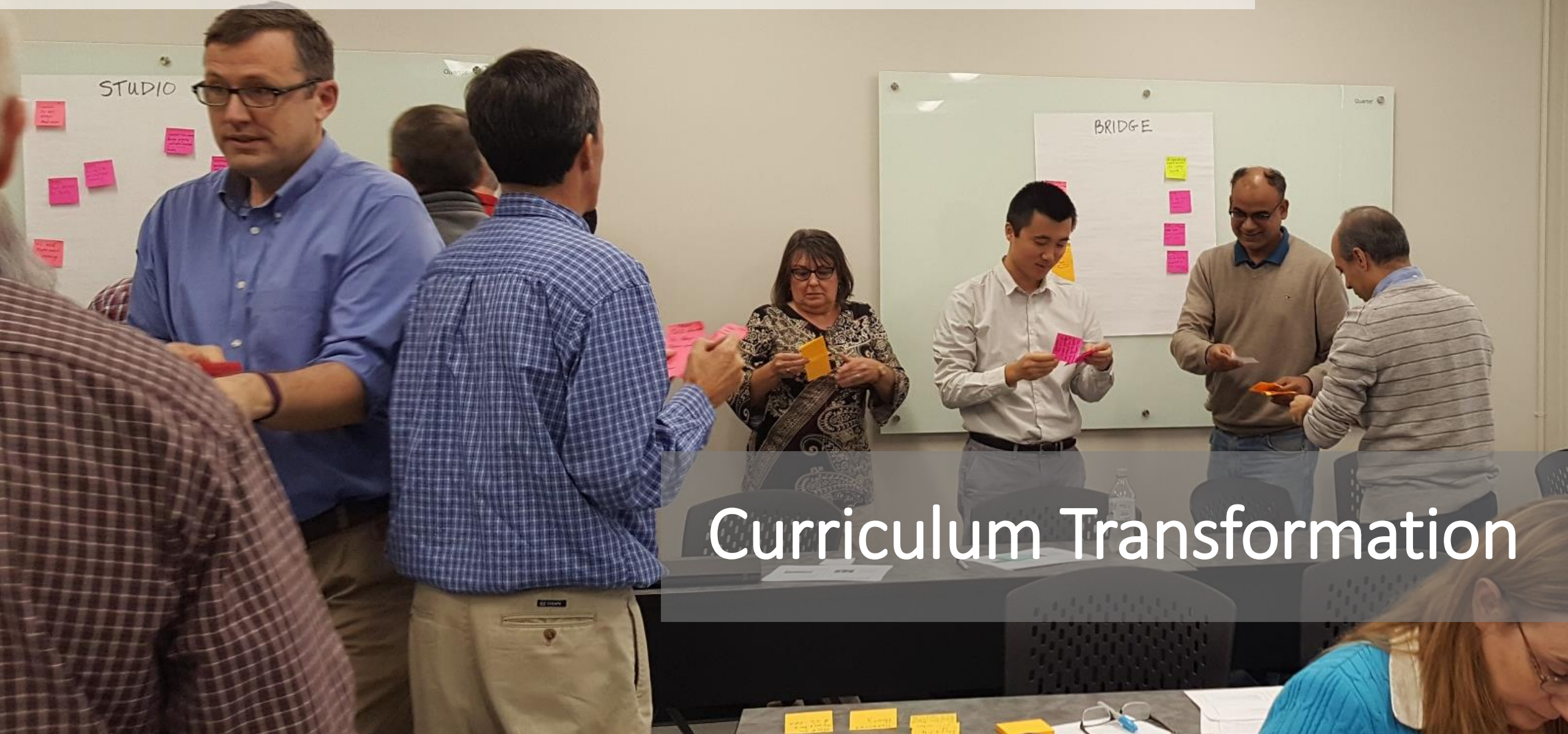
A young child with light-colored hair is sitting at a dark wooden table. They are wearing a black VR headset and have their hands clasped under their chin, looking intently at the screen. The background is a blurred indoor setting with a white chair and a lamp.

Heterogeneous Teams



Cognitive and cultural diversity of teams has been found to improve performance and innovation...but its not easy.

Creating an environment ripe for the emergence of innovative ideas by building capacity for positive interpersonal connections.



Curriculum Transformation

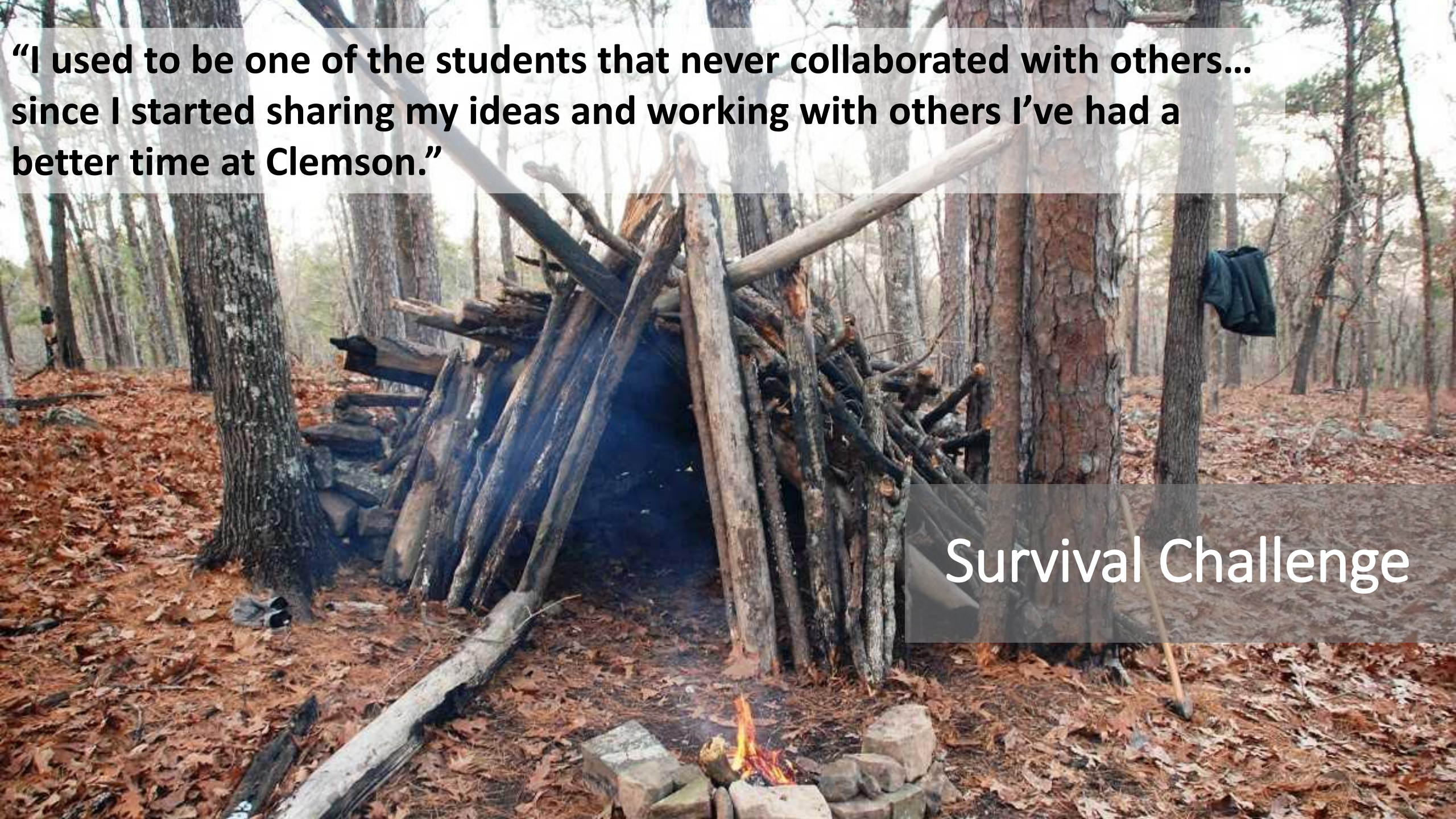
A photograph of three young men on a golf course. They are wearing high-visibility safety vests over their t-shirts. The man on the left is wearing a red cap with 'CLEMSON' written on it. The man in the middle is holding a white surveying pole. The man on the right is holding a clipboard. The background shows a grassy area and some trees.

CE·MENT Peer Mentoring Program

Networking with our incoming sophomores to help them successfully navigate from general engineering into civil engineering.

“I used to be one of the students that never collaborated with others... since I started sharing my ideas and working with others I’ve had a better time at Clemson.”

Survival Challenge



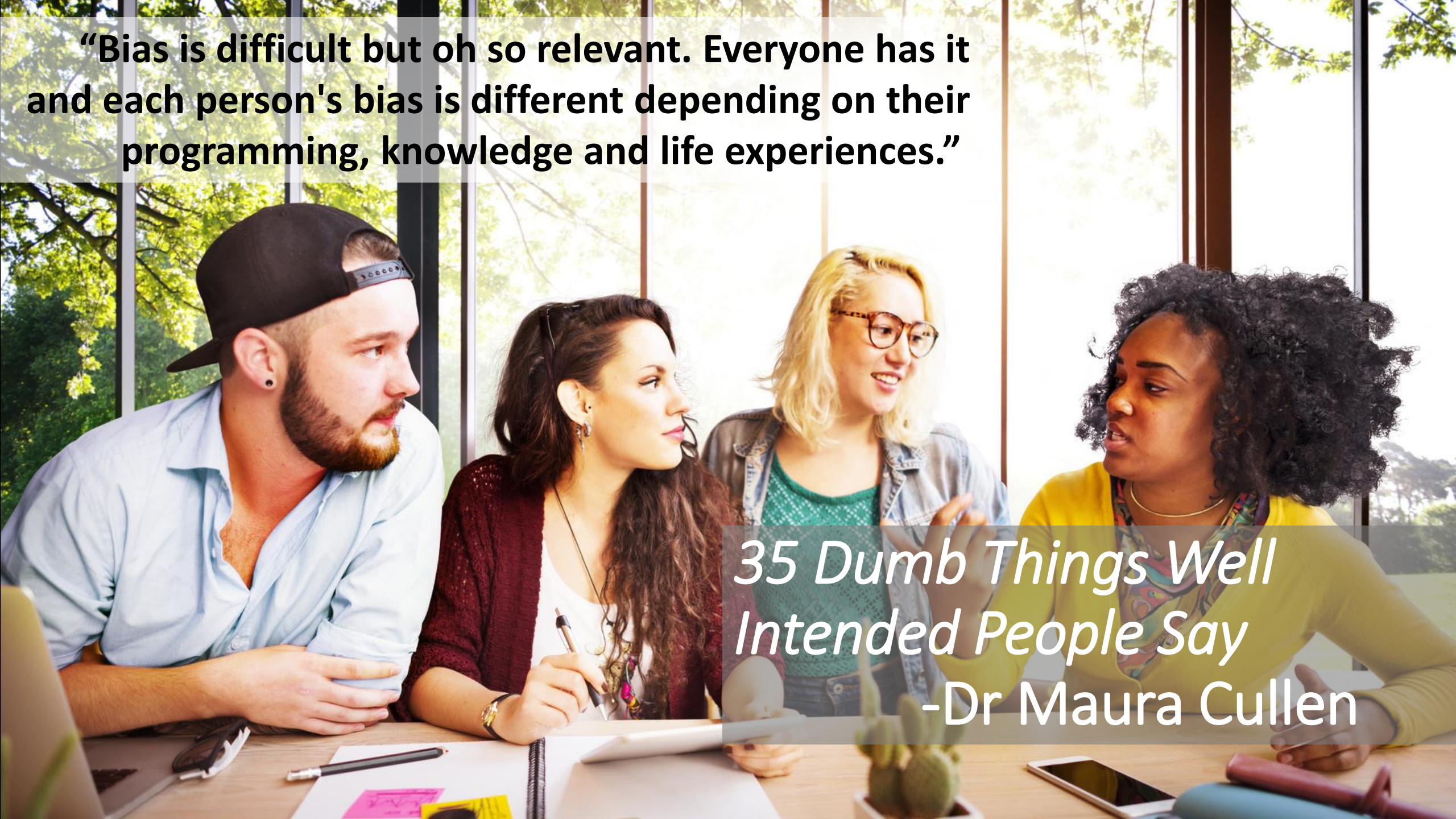
“This class made me more mindful of those people around me, that they may be experiencing things that I never [have], and might not think about.”



Privilege Race

“Bias is difficult but oh so relevant. Everyone has it and each person's bias is different depending on their programming, knowledge and life experiences.”

*35 Dumb Things Well
Intended People Say*
-Dr Maura Cullen





Making new students feel welcome and at home in the #ClemsonFamily.

Change Makers

As we weave coursework and hands-on projects vertically and horizontally throughout curriculum, we will also build our students capacity in empathy and social interaction.



Scaling Up

A wide-angle shot of a football stadium during a game. The stands are packed with fans, many wearing orange. A large amount of orange confetti is falling from the stands, creating a festive atmosphere. In the foreground, several football players in orange jerseys and white pants are running on the field. One player's jersey has the name "LAMBERT" and the number "76" on the back. Other players have numbers like "57", "30", "54", and "84" visible. The field is green with white yard lines, and a yellow flag is on the ground. The sky is blue with some clouds.

The most exciting 20 seconds of this presentation.

We are #allin !